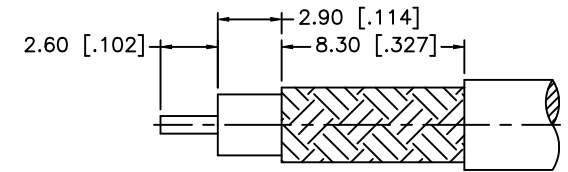
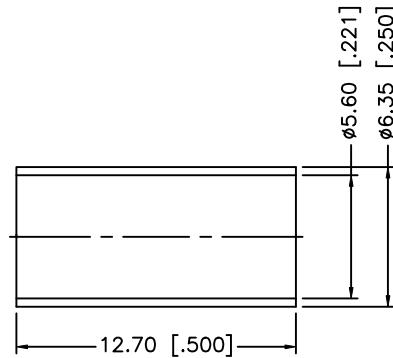
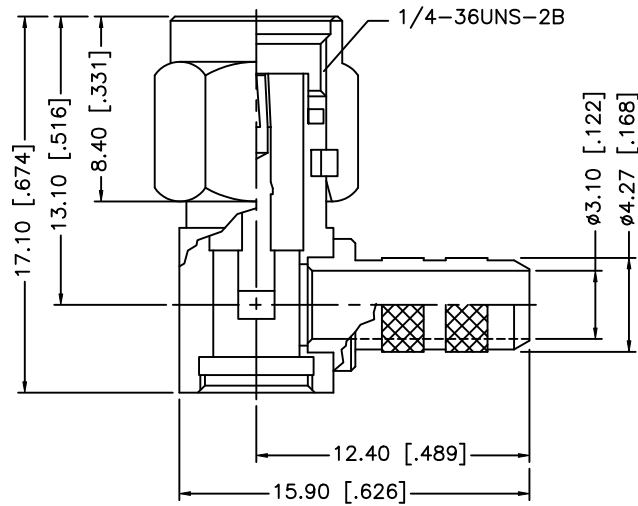
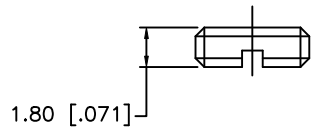


REV.	DATE	ECR NO.	DESCRIPTION
A	04/31/03	-	UPDATE DRAWING FORMAT
B	06/21/05	-	CHANGE 59/U TO 58/U IN PART DESCRIPTION
C	09/10/08	-	CHANGE 58/U TO 55/U IN PART DESCRIPTION



RECOMMENDED  
CABLE STRIPPING DIM'S



NOTE:

1. CRIMPED FERRULE HEX CRIMP SIZE .213" [5.41]
2. CONTACT PIN TO SOLDER.

DESCRIPTION	MATERIAL	FINISH	QTY	DO NOT SCALE DRAWING	APPROVALS	DATE	Amphenol Connex						
8							<b>SMA R/A CRIMP PLUG (FOR RG-55/U, 223/U, 142/U, 400/U CABLE)</b>						
7	FERRULE	COPPER	GOLD	1	DRAWN	GRS					09/10/08	PART DESCRIPTION	
6	COVER	BRASS	GOLD	1	CHECKED							PART NO.	
5	GASKET	SILICONE	RED	1	ISSUED							132194	
4	RETAINER RING	BER. COPPER	NATURAL	1	SHEET	1 OF 1						DWG. NO.	
3	CONTACT PIN	BRASS	GOLD	1				132194.DWG					
2	INSULATOR	PTFE	NATURAL	1				REV. NC					
1	BODY/BARREL	BRASS	GOLD	1				SIZE A					
								SCALE NA					

UNLESS OTHERWISE SPECIFIED DIMENSIONS ARE IN MILLIMETERS. DIMENSIONS IN [ ] ARE IN INCHES AND FOR CUSTOMER REFERENCE ONLY.

UNLESS OTHERWISE SPECIFIED TOLERANCES FOR MILLIMETERS ARE:  
0.5 - 8mm ± 0.20mm  
8 - 30mm ± 0.40mm  
30 - 120mm ± 0.50mm

UNLESS OTHERWISE SPECIFIED TOLERANCES FOR INCHES ARE:  
.020 - .315 ± 0.007"  
.315 - 1.180 ± 0.015"  
1.180 - 4.724 ± 0.020"

CAD FILE  
C:/132/132194.DWG